

The genomic architecture of disease resistance in lettuce

Leah K. McHale · Maria José Truco · Alexander Kozik · Tadeusz Wroblewski ·
Oswaldo E. Ochoa · Kirsten A. Lahre · Steven J. Knapp · Richard W. Michelmore

Published online: 20 March 2009
© Springer-Verlag 2009

Erratum to: Theor Appl Genet (2009) 118:565–580
DOI 10.1007/s00122-008-0921-1

Unfortunately, Fig. 3 of this article had incorrect marker names on the genetic map due to a frameshift in the data that occurred while correcting the proofs. The correct version is given on the following page.

The online version of the original article can be found under
doi:[10.1007/s00122-008-0921-1](https://doi.org/10.1007/s00122-008-0921-1).

L. K. McHale · M. J. Truco · A. Kozik · T. Wroblewski ·
O. E. Ochoa · K. A. Lahre · R. W. Michelmore (✉)
The Genome Center and Department of Plant Sciences,
University of California, Davis, CA 95616, USA
e-mail: rwmichelmore@ucdavis.edu

L. K. McHale
e-mail: lkmchale@ucdavis.edu

S. J. Knapp
Institute of Plant Breeding, Genetics and Genomics,
Center for Applied Genetic Technologies,
University of Georgia, Athens, GA 30602, USA

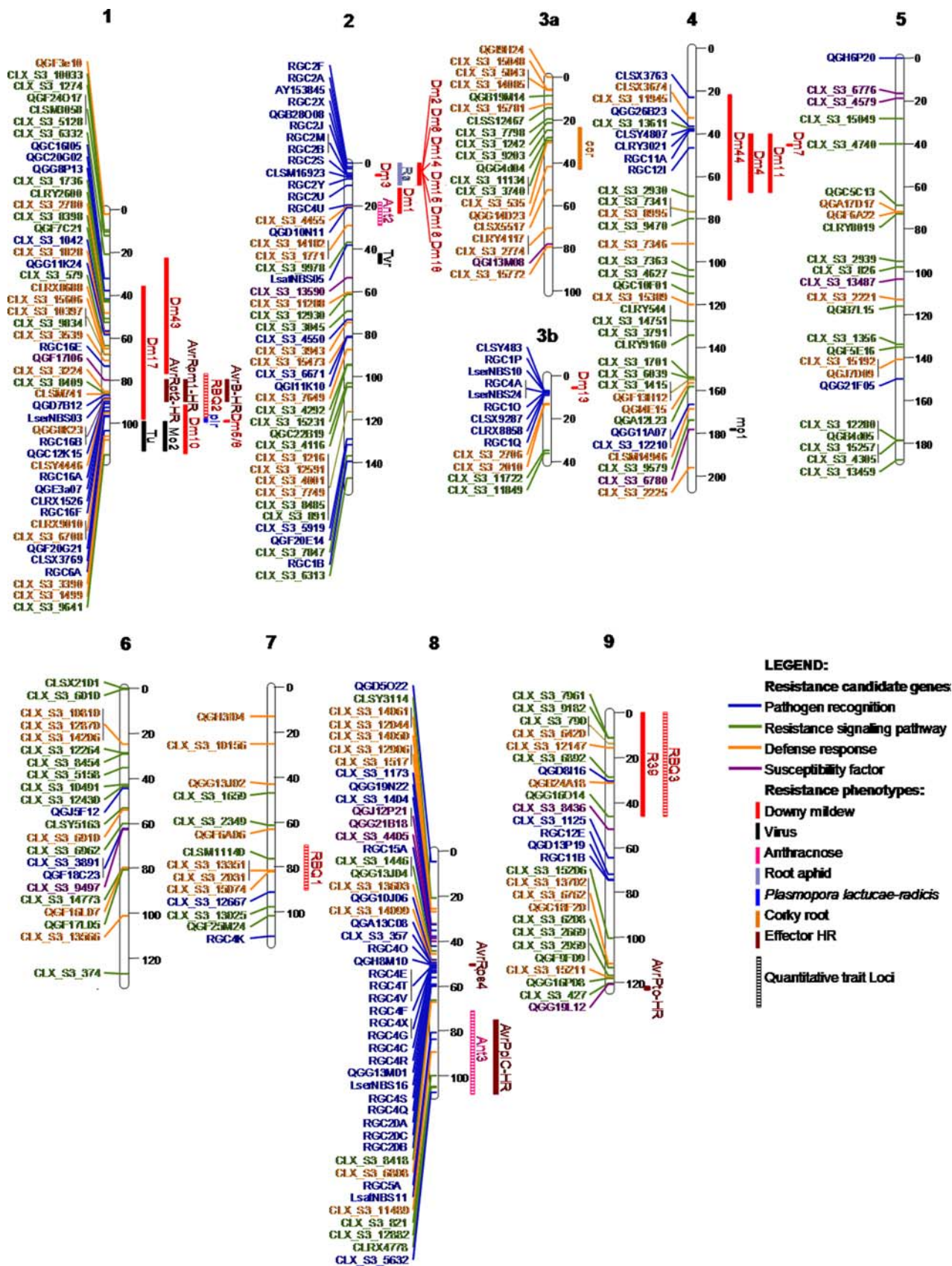


Fig. 3 Lettuce genetic map displaying 294 mapped candidate resistance genes and 35 resistance phenotypes. Sequence names have been abbreviated for display, see S1 for full names. Figure created with MapChart (Voorrips 2002)